

Wireless Printing @ Your Library!



Windows OS using the Edge browser 




Create. Connect. Change.

SPARTANBURG COUNTY
PUBLIC LIBRARIES

Connect to SCPL Wireless Network

In bottom right, click  (Windows 7) or  (Windows 10) > click LIBRARY > click **Connect**.

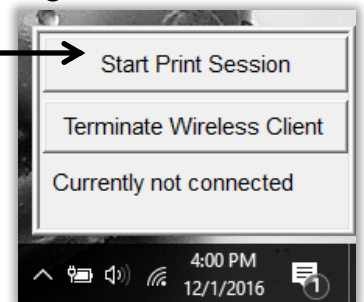
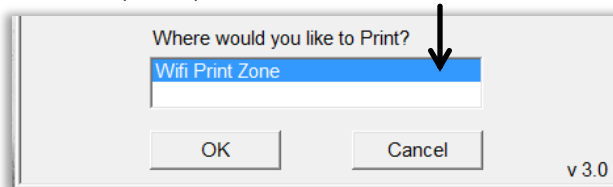
Download Software and Install Print Client

1. Double click **Edge** , type <http://spartanburglibraries.org> in the URL bar > click **USING THE LIBRARY** > click **Computer Use** > **Wi-Fi Network and Wireless Printing**.
2. Under *Wireless Printing*, click **Download Windows Software** > click **Save** > click **Run**.
 - o If you see, *Windows protected your PC* > click **More info** > **Run anyway** > **Yes**.
3. Follow prompts to install the software (this may take a few minutes).
4. The pop up *Setup Virtual Printer...* appears and then disappears.
5. When the printer is set up, a small window appears at the bottom right corner.

o Click **Start Print Session**.



6. Enter your *library card number, PIN*, and click **Wifi Print Zone**.

7. Once *WiFi Print Zone* is highlighted blue, click **OK**.



8. When you print, click **Wireless Printer** from *Destination* and then click **Print**.
9. Look for two notifications: one in bottom right (near time) that makes a sound and one in the center of your screen with a green check mark.
10. Files can then be printed at any Print Release Station across the SCPL system.

Start Wireless Printing after Initial Download

1. Open **Start** (bottom left on task bar)  Windows 7;  Windows 10.
2. From your programs list, click **Wireless Library Print System** > **Wireless Print System**.
3. Enter your *library card number, PIN*, and click **Wifi Print Zone** > click **OK**.
4. When you print, click **Wireless Printer** from *Destination* and then click **Print**.

Uninstall Wireless Printing Software

Open **Start** > click **Wireless Library Print System** > click **Uninstall Wireless Library Print System**.